

TUBE

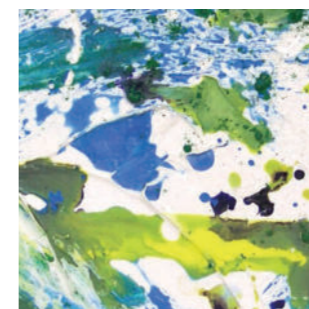


*40ml only available for
(066) Mars Black,
(067) Carbon Black,
(068) Titanium White,
(069) Mixing White.

For 100ml line-up please see "Colorful AQYLA!" inside of this brochure or another special leaflet.

[actual size]

A Q Y L A C o m p l e t e G u i d e b o o k



Explore Your Art with AQYLA

Every thing you need to know about AQYLA is here!

What's AQYLA? What can I do with AQYLA?

We answer all of your question in this guide-book from basic features to inspirations for your art.

Let's discover everything about AQYLA.



KUSAKABE Corporation

3-3-8 hizaoricho, Asaka City, Saitama, JAPAN 351-0014

<http://www.kusakabe-enogu.co.jp>

<http://www.kusakabe-enogu.com> (online store)

Price ¥200 (Tax inclusive)

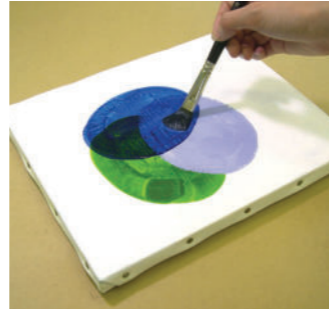
18F 500



Contents

The 5 Features

- 1 Color Payoff (p.2)
- 2 Drying (p.3)
- 3 Workable Surfaces (p.4)
- 4 Painting on and with Oil-Based Materials (p.5)
- 5 Environment and Ecology (p.6)



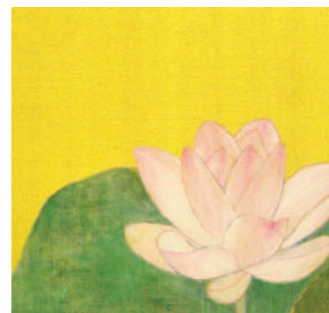
Let's Paint: Starting with AQYLA

- 6 Painting with AQYLA (p.7)
- 7 AQYLA Techniques (p.8)
- 8 Using with Oil Paint (p.9)



AQYLA Medium **NEW!**

- 9 ALKYD MEDIUM GLOSS / MATTE (p.10)
- 10 RAPID MEDIUM / MODELING PASTE (p.11)
- 11 LEVELING LIQUIDE / RETARDER (p.12)
- 12 CLEAR TOP COAT (p.13)



The Attraction of AQYLA: World's first Water-Based Alkyd Resin Paint

Color Payoff

1



The greatest attraction of AQYLA out of all others is the color payoff.

The unque formula with the latest, high performing pigments doesn't have any extender* and provides the richest, softest, and most luxurious colors. The water-based foumula also gives AQYLA its fresh texture and smoothness.

You'll be enchanted with AQYLA's beauty.

* Extender controls coloring power of paints, it's used as a filler as well.

COLORFUL AQYLA!

Described in the order of weather resistance, transparency, pigment, seriee. Details of content, please refer to p.14.



No.024 Ivory White 100

Light cream color. Titanium white and benzimidazolone yellow as pigment.

★★
Opaque color
PW6, PY180
B



No.015 Bismuth Yellow 100

Vivid and rich yellow. Bismuth vanadate as pigment.

★★★★
Opaque color
PY184
E



No.016 Titanium Yellow

Cream yellow with strong covering power. Nickel titanium yellow as pigment.

★★★★
Opaque color
PY53
C



No.020 Imidazolone Yellow 12 18 100

One of the 3 AQYLA primary colors. Vivid reddish yellow with transparency. Benzimidazolone yellow as pigment.

★★★★
Transparent color
PY180
D



No.021 Monoazo Yellow Lemon 18 100

Vivid and fresh yellow. Hansa yellow (monoazo) as pigment.

★★★★
Translucent color
PY3
B



No.014 Bismuth Yellow Deep

Rich reddish bright yellow. Bismuth vanadate and pyrrole orange as pigment.

★★★★
Opaque color
PY184, PO73
E

Dries quickly yet solidifies slowly!?
AQYLA dries absolutely uniquely!

No Wait, No Rush

1 Dries Quickly with water evaporation

- After the surface dries it won't stick.
- Easy layering improves productivity.

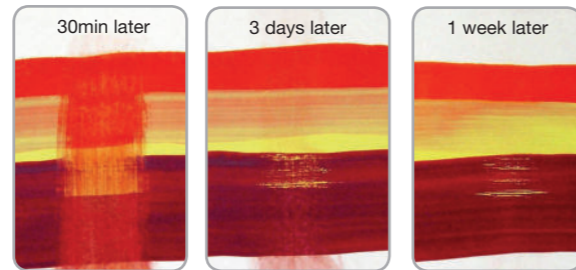


Rub the surface with wet brush.

2 Solidifies Slowly by taking in oxygen.

You can touch up the colors in the beginning but it gradually becomes water resistant.

- You won't be rushed like with quick drying water-based paints.
- You can do wash technique as well.
- You can clean the brushes with soap the next day even if you forget to do so on the day.



Washes out Washes out little Doesn't wash out

Colors:
from top to bottom
pyrrole vermillion,
titanium yellow,
perylene maroon

Support medium:
Kent paper

AQYLA Questions!

- Q** How long does it take to dry completely (water resistant) ? **Q** Can AQYLA be left on the palette to dry and used like watercolor?
- A** AQYLA takes about a month and half to dry completely. It dries quicker with an absorbing medium like paper. **A** AQYLA becomes quite water resistant in a few days. It's better not to let it dry, but to use it up on the same day.
- Q** Does the color underneath wash out if colors are layered immediately after drying?
- A** It may wash out if you scratch the surface or layer colors with a lot of water but it doesn't wash out as much as watercolor.

COLORFUL AQYLA!

Described in the order of weather resistance, transparency, pigment, serie.

Details of content, please refer to p.14.

No.019 Disazo Yellow

Transparent bright yellow with strong red tone. Disazo yellow HR as pigment.

★★★
Transparent color
PY83
B

No.013 Imidazolone Orange

Bright orange with yellow tone. Benzimidazolone orange as pigment.

★★★★
Opaque color
PO62
D

No.012 Vulcan Orange 18 100

Vivid persimmon orange. Dianisidine orange as pigment.

★★
Translucent color
PO16
B

No.010 Pyrrole Vermilion Light

Classic bright red with slight yellow tone. Benzimidazolone orange as pigment.

★★★★
Opaque color
PY154, PO73
D

No.007 Naphthol Scarlet 12 18 100

Muted reddish orange. Becomes more vivid when diluted. Naphthol scarlet as pigment.

★★★★
Translucent color
PR188
C

No.009 Pyrrole Vermilion

Shiny reddish bright red. DPP red and pyrrole orange as pigment.

★★★★
Opaque color
PR254, PO73
D

AQYLA can work on various surfaces.
It's great for both art and craft!

Workable Surfaces

Paper

Daler Rowney's watercolor paper, langton prestige has the perfect absorbency for AQYLA and brings out the best color.

Canvas

Works well both on water-based and oil-based canvases.

Plaster

Perfect for delicate expressions with tempera.

Wood

The shine and colors are great for tole painting.

Cloth¹

1. Not recommended for wearable.

2. Cannot be used on dishes, only for decoration purposes.

You can enjoy AQYLA's distinctive vivid colors on clothes.

Porcelain²

Porcelain's smooth surface and AQYLA's smooth texture work very well together.

Glass

You can paint like stained glass. It brings out the transparent but vivid beautiful colors.

◆Appropriate support medium for AQYLA.

PVC	○
Polypropylene(PP)	×
PET resin	○
Polystyrene(PS)	×
Acrylic board	×

There are many different types of plastics, some may not work as well as others. Testing is recommended.

Plastic

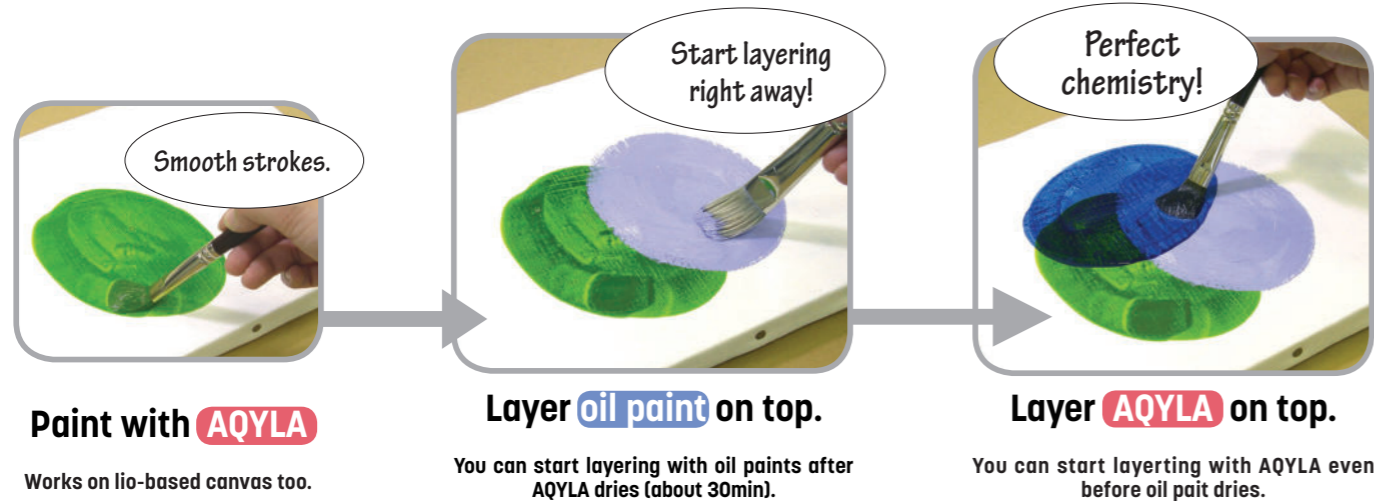
Suitable and safe for children's craft.

Metal

Paints very well directly on metals such as copper, stainless steel and aluminum.

AQYLA is water-based but works very well with oil paint. Let's explore the mechanism.

with Oil Paint !?



Why does AQYLA work with oil paint?

Hello, I'm a water-based alkyd resin.

I'm half acrylic resin and half oil-based resin.

I live in the water bubbles in AQYLA.

When water evaporates...

I can be friend with oil-based resin too. You know I'm half oil-based resin.

Q What can I use to dilute when I'm layering oil paint on top of AQYLA?

A You can use water when using AQYLA with oil paint.

Q Can I mix AQYLA with oil paint?

A You can mix about the same amount of AQYLA and OIL paint. But it's not recommended because you have to mix it quickly and it will change the texture.

Q What's the best way to layer AQYLA and oil paint?

A It's best start layering when the surface is dry to touch. But no structural problems will occur even if it is not completely dry. You can also enjoy interesting textures by taking advantage of their characteristics like layering AQYLA on top of wet oil paint for the repelled effect. (See p.9 and p.10)

*The white paint on canvas is either water-based. Normally, you cannot use water-based paint on top of oil-based canvas but AQYLA works very well on both types.

Described in the order of weather resistance, transparency, pigment, series.

Details of content, please refer to p.14.

COLORFUL AQYLA!

No.017 Titanium Buff

Bright ochre. Chrome antimony titanium buff as pigment. ★★★★★
Opaque color PBr24 C

No.018 Yellow Ochre 12 18 100

Regular ochre color. Yellow iron oxide as pigment. ★★★★★
Opaque color PY42 A

No.055 Raw Sienna 100

Slightly reddish ochre. Red iron oxide, yellow iron oxide, and Carbon black. ★★★★★
Opaque color PR101, PY42, PBk6 B

No.059 Transparent Yellow Oxide

Transparent ochre. Transparent yellow iron oxide as pigment. ★★★★★
Transparent color PY42 A

No.022 Fresh No.1

Yellowish cream color. Titanium oxide, disazo yellow and quinacridone red as pigment. ★★★
Opaque color PW6, PY83, PO62 C

No.023 Fresh No.2 100

Pale pink. Titanium oxide, bismuth vanadate and DPP red as pigment. ★★★
Opaque color PW6, PY184, PR254 C

No.005 Anthraquinone Red

Rich muted bluish red. Anthraquinone red as pigment. ★★★★★
Transparent color PR177 D

No.004 Perylene Maroon

Rich wine red. Perylene maroon as pigment. ★★★
Transparent color PR179 B

No.048 Quinacridone Violet

Dark red-purple. Quinacridone violet as pigment. ★★★★★
Translucent color PV19 C

No.050 Dioxazine Violet 12 18 100

Rich and vivid purple. Dioxazine violet as pigment. ★★★★★
Transparent color PV37 B

No.049 Deep Violet

Deep purple with strong hint of blue. dioxazine violet and phthalocyanine blue as pigment. ★★★★★
Transparent color PV23, PB15:3 A

No.051 Violet

Bright red-purple. Titanium oxide, dioxazine violet and quinacridone red as pigment. ★★★
Opaque color PW6, PV23, PV19 C

AQYLA is people and environment-friendly. Great Even After Use

イラスト：デラー・ラウニー社製最高級水彩紙「ラングトン・プレステージ」にアキアで着彩。

Painting with AQYLA!

Tools used

- AQYLA
- canvas
- nylon brushes
- painting knife
- paper palette
- water bottle

Let's try!



You don't need varnish to protect the surface. If you want to add a shine, use AQYLA medium "CLEAR TOP COAT" (p.13)

Speed of Acrylic Paint

AQYLA is used with water. It dried quickly with no wait.



Touch UP Once Dry

AQYLA dries quickly but solidifies slowly so you can still create different expression even after the surface dries.



Q I'd like to switch from acrylic paint to AQYLA, what can I do with my leftover acrylic paint?

A You can use AQYLA with acrylic paint. When using them together, make sure to layer AQYLA on top of acrylic paint. This is the same for watercolor. You can use them together but mixing paints is not recommended.



COLORFUL AQYLA!

Described in the order of weather resistance, transparency, pigment, series.

Details of content, please refer to p.14.

	No.030 Yellow Green	Bright pea green with strong hint of yellow. Titanium white, hansa yellow(monoazo) and phthalocyanine green as pigment.	★★★ Opaque color PW6, PY3, PG7 B
	No.029 Green Light	Bright yellow green. Hansa yellow, phthalocyanine green and disazo yellow as pigment.	★★★ Opaque color PY3, PG7, PY83 B
	No.035 Sap Green	Transparent grass green. Isoindolinone yellow, disazo yellow and phthalocyanine green as pigment.	★★★ Transparent color PY110, PY83, PG7 C

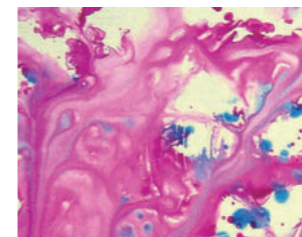
	No.025 Titanium Cobalt green	Soft and thick green. Titanium cobalt green as pigment.	★★★★ Opaque color PG50 D
	No.028 Phthalo Green Yellow Shade	Transparent vivid green. Phthalocyanine green as pigment.	★★★ Transparent color PG36 B
	No.031 Emerald Green	Vivid and pop yellowish green. Hansa yellow, titanium oxide and phthalocyanine green as pigment.	★★★ Opaque color PY3, PW6, PG7 B

	No.037 Pale Green	Bluish pastel green. Titanium oxide, phthalocyanine green, phthalocyanine blue and hansa yellow as pigment.	★★★ Opaque color PW6, PG7, PB15:3, PY3 C
	No.046 Aqua Blue	Clear ocean-like light blue. Titanium oxide, phthalocyanine green and phthalocyanine blue as pigment.	★★★ Opaque color PW6, PG7, PB15:3 C
	No.041 Cobalt Light Blue	Vivid turquoise blue. Titanium cobalt lithium blue as pigment.	★★★★ Translucent color PB28 E

	No.039 Cobalt Blue	Fresh blue with strong covering power. Cobalt blue as pigment.	★★★ Opaque color PB28 D
	No.040 Cerulean Blue	Clear blue sky like bright blue. Cerulean blue as pigment.	★★★ Translucent color PB35 E
	No.043 Phthalo Blue	Vivid and rich blue same as primary color's cyan. phthalocyanine blue as pigment.	★★★★ Transparent color PB15:3 A

You can be creative with AQYLA using various expressions and techniques.

AQYLA Techniques



Marbling

Pour AQYLA over your canvas and tilt to create marbling effect.



Matiere

Texturize with painting knives.



Illustration

Vivid colors are perfect for illustration work.



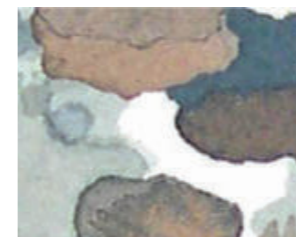
Collaging

Using AQYLA as glue.



Scratching

Layer colors and scratch.



Blurring

Blurring effect unique to AQYLA.



Prints

Slow solidification makes it great for prints.



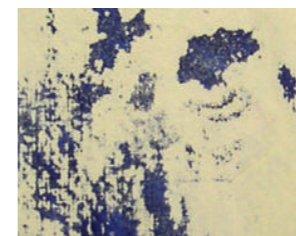
Air Brush¹

Sprays beautifully.



Hatching

AQYLA makes it easy to create fine lines.



Washing

Layer colors and wash the surface with water.



Gold Leaf

Pearl colors look like gold leaf.



Ink Painting

Ink effect with variety of colors.

¹ : As pearl gold, silver and bronze have bigger particles than other colors, it may not be suitable for air brushes with smaller nozzles.

Possibilities are endless: Using AQYLA with oil paints.

Possibilities of Oil Paints

Technique 1

Sharpening the picture.



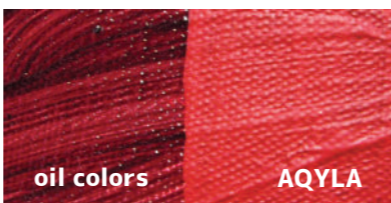
Drawing fine electric cable lines with AQYLA on top of sky painted with oil paints. AQYLA's smooth texture is perfect for drawing fine lines.



AQYLA on OIL Color

Technique 3

Matte finish.



AQYLA creates matte finish that oil cannot create.

Technique 4

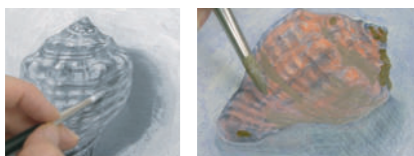
Organic shapes from fits Water-repellent effect

Layering water diluted AQYLA on top of oil paint surface. This create interesting organic shapes.



Delicate expression.

You can have the great characteristics of both oil paint and AQYLA.



Technique 2

ALKYD MEDIUM GLOSS/MATTE

ALKYD MEDIUM GLOSS



40ml

100ml

Transparent/Glue/Gloss

Mixing with AQYLA, the transparency and gloss increases. It can be used to pile up or as a collage's glue.

- It can be used alone.
- There is no usage limitation on amount when it is mixed.
- Exclusive use dries slowly.

ALKYD MEDIUM MATTE



40ml

100ml

Transparent/Glue/Matte

Mixing with AQYLA, the transparency increases without gloss. It can be used to pile up or as a collage's glue.

- It can be used alone.
- There is no usage limitation on amount when it is mixed.
- Exclusive use dries slowly.

COLORFUL AQYLA!

Described in the order of weather resistance, transparency, pigment, serie. Details of content, please refer to p.14.

	No.038 Ultramarine Blue 12 18 100	Vivid reddish blue. Ultramarine as pigment. ★★ Translucent color PB29 B
	No.042 Phthalo Blue Red Shade	Deep dark blue. Phthalocyanine blue as pigment. ★★★★★ Transparent color PB15:6 B
	No.045 Blue Gray No.2	Reddish blue gray. Titanium oxide, dioxazine violet and phthalocyanine blue as pigment. ★★★★★ Opaque color PW6, PV23, PB15:6 C

	No.044 Blue Gray No.1	Slightly reddish fresh blue. Titanium white, dioxazine violet and phthalocyanine blue as pigment. ★★★★★ Opaque color PW6, PV23, PB15:3 C
	No.052 Blue Violet	Hydrangea-like bluish purple. Titanium oxide, dioxazine violet and phthalocyanine blue as pigment. ★★★★★ Opaque color PW6, PV23, PB15:6 B
	No.053 Lavender	Pastel light purple. Titanium oxide, dioxazine violet and phthalocyanine blue as pigment. ★★★★★ Opaque color PW6, PV23, PB15:6 B

	No.032 Oxide Of Chromium	Grayish, toned-down green. ★★★★★ Opaque color PG17 C
	No.033 Terre Verte 100	Grayish, toned-down green. ★★★★★ Translucent color PBk7, PG17, PG8 B
	No.036 Olive Green 100	Brownish yellow green. Phthalocyanine green, disazo yellow and benzimidazolone brown as pigment. ★★★★★ Transparent color PG7, PY83, PBr25 B

	No.027 Phthalo Green 12 18 100	Transparent vivid green. Phthalocyanine green as pigment. ★★★★★ Transparent color PG7 A
	No.026 Phthalo Green Blue Shade	Transparent blue green. Phthalocyanine Blue as pigment. ★★★★★ Transparent color PB76 D
	No.034 Hooker's Green	Rich toned-down deep green. ★★★★★ Transparent color PG8 C

RAPID MEDIUM/ MODELING PASTE



RAPID MEDIUM



Dry/Transparent

Mixing with AQYLA, it will turn to be water proof immediately. When a lot of rapid medium was mixed, the paint's transparency will be increased and no gloss.

- Mix with AQYLA directly.
- There is no usage limitation on amount when it is mixed.
- Please do not paint too thick each time.



MODELING PASTE

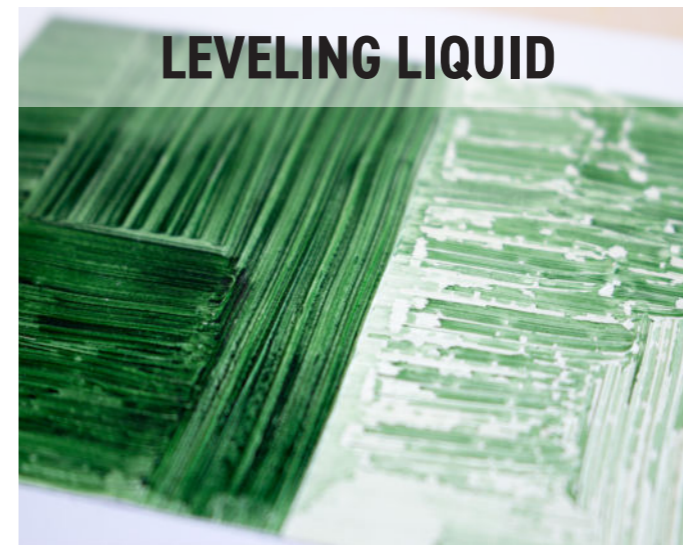


Material

It can be used as material or used as a base paint material. It can be mixed with AQYLA directly.

- Mix with AQYLA directly.
- It can be used alone.
- There is no usage limitation on amount when it is mixed.
- Please do not paint too thick each time.

LEVELING LIQUID/ RETARDER



LEVELING LIQUID



50ml

Leveling

It is used on smooth surface such as glass and oil surface. Mixing 1 to 2 drops into paint, and dilute with water to use.

- Mix 1 to 2 drops into AQYLA, dilute with water for use.
- It should be well mixed with AQYLA.
- If it is mixed too much, the surface may have bounce effect.



RETARDER



50ml



200ml

Extend drying time

By slightly mixing with AQYLA, the drying time will be extended, the ductility of the paint improved, and easy to gradation paint.

- Mix with AQYLA directly.
- The mixed amount is limited to 20% when mixed with AQYLA.
- If it is mixed too much, the drying and stickiness will take longer time.

COLORFUL AQYLA!

Described in the order of weather resistance, transparency, pigment, serie.

Details of content, please refer to p.14.

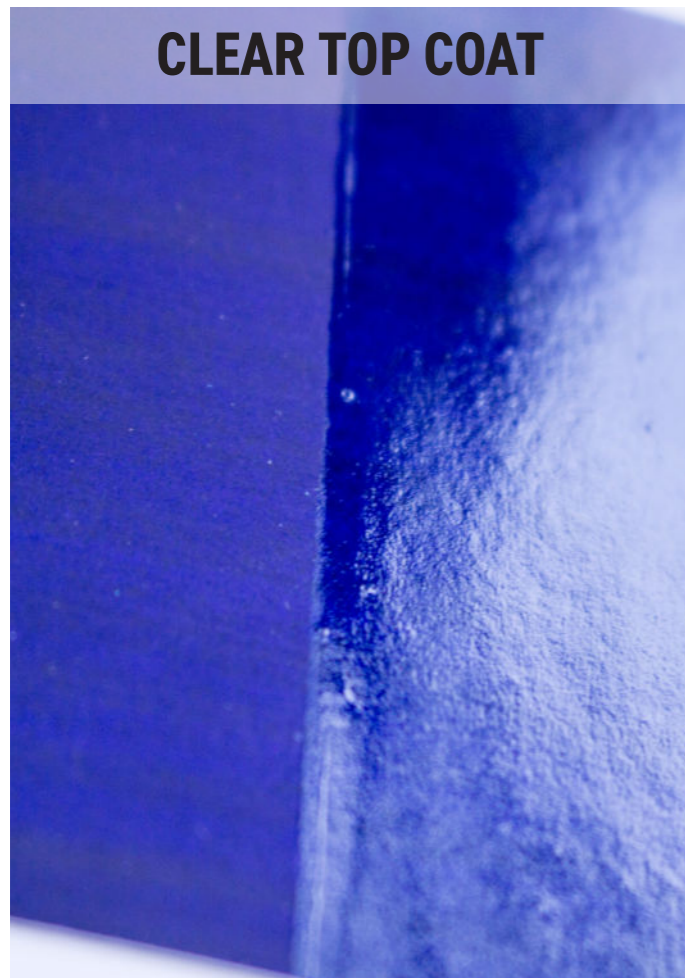
	No.054 Red Oxide 12 18 100	Reddish brown with strong covering power. Red iron oxide (called "bengala" in Japan) as pigment.	★★★★ Opaque color PR101 B
	No.060 Transparent Red Oxide	Brown with strong transparency. Transparent red iron oxide as pigment.	★★★★ Transparent color PR101 A
	No.047 Mars Violet	Substantial red brown. Violet iron oxide as pigment.	★★★★ Opaque color PR101 C

	No.057 Raw Umber	Slightly bluish brown. Iron oxide as pigment.	★★★★ Opaque color PR101 B
	No.062 Imidazolone Brown	Transparent dark brown. Benzimidazolone brown as pigment.	★★★★ Transparent color PBr25 D
	No.061 Sepia 100	Substantial dark brown. Transparent iron oxide, carbon black as pigment.	★★★★ Transparent color PR101, PBk6 B

	No.056 Burnt Sienna 100	Slightly yellow chestnut color. Iron oxide red, iron oxide yellow and carbon black as pigment.	★★★★ Translucent color PR101, PY42, PBk6 B
	No.058 Burnt Umber 18 100	Slightly reddish deep brown. Iron oxide red, iron oxide yellow and lamp black as pigment.	★★★★ Translucent color PR101, PY42, PBk7 A
	No.065 Payne's Gray 100	Bluish rich gray. Aniline black and phthalocyanine blue as pigment.	★★★ Transparent color PBk1, PB15:6 B

	No.063 Grisaille Gray No.1	Bluish gray perfect for grisaille technique. Titanium white and copper chrome black as pigment.	★★★★ Opaque color PW6, PBk28 C
	No.064 Grisaille Gray No.2 100	Bright gray perfect for grisaille technique. Titanium white and copper chrome black as pigment.	★★★★ Opaque color PW6, PBk28 C
	No.066 Mars Black 40 100	Pure black with strong covering power. Iron oxide black as pigment.	★★★★ Opaque color PBk11 B

CLEAR TOP COAT



Finish/Gloss

In order to show the glossy after the painting completed, use it directly without diluting. If it piled up several times, the gloss will be increased.

- Please do not dilute. Using undiluted solution directly.
- If paint more times, the gloss will be increased.
- It won't be water proof after drying.
- **Please do not mix with AQYLA.**

COLORFUL AQYLA!

	No.067 Carbon Black 12 18 40 100	Warm ink color. Carbon black as pigment. ★★★★★ Translucent color PBk6 A
	No.068 Titanium White 40 100	White with strong covering power. High whiteness, ideal as highlights. Titanium oxide as pigment. ★★★★★ Opaque color PW6 C
	No.069 Mixing White 12 18 40 100	Soft off-white with mild covering power. Good coloring power makes it ideal for mixing with other colors. ★★★★★ Translucent color PW6, PW26 A

Described in the order of weather resistance, transparency, pigment, seriese.
Details of content, please refer to p.14.

	No.070 Pearl Gold 100	Gold with strong shine, adds brilliance to the work. Pearl pigment. ★★★★★ Opaque color PW20 D
	No.071 Pearl Bronze 100	Bronze with warm shine, blends well. Pearl pigment. ★★★★★ Opaque color PW20 D
	No.072 Pearl Silver 100	Silver with bright shine. Good for mixing with other colors and on top of dark colors. Pearl pigment. ★★★★★ Opaque color PW20 D

SET

20ml SET



12 color set



18 color set

- | | | | |
|------------------------|----------------------|--------------------------|----------------------|
| 006 Naphthol Rubine | 038 Ultramarine Blue | 006 Naphthol Rubine | 031 Emerald Green |
| 007 Naphthol Scarlet | 043 Phthalo Blue | 007 Naphthol Scarlet | 038 Ultramarine Blue |
| 018 Yellow Ochre | 050 Dioxazine Violet | 008 Naphthol Red | 043 Phthalo Blue |
| 020 Imidazolone Yellow | 054 Red Oxide | 012 Vulcan Orange | 046 Aqua Blue |
| 027 Phthalo Green | 067 Carbon Black | 018 Yellow Ochre | 050 Dioxazine Violet |
| 029 Green Light | 069 Mixing White | 020 Imidazolone Yellow | 054 Red Oxide |
| | | 021 Monoazo Yellow Lemon | 058 Burnt Umber |
| | | 027 Phthalo Green | 067 Carbon Black |
| | | 029 Green Light | 069 Mixing White |

■ Weather resistance :
Resistance to external stimuli such as light and gases in the air.
★★★★ High stability colors.
★★★ No particular problems with normal use.
★★ May deteriorate under certain conditions.
★ Will deteriorate.

12 12 color set 18 18 color set
40 40ml 100 100ml



No.021 Monoazo Yellow Lemon 18 100 pigment
Vivid and fresh yellow. Hansa yellow (monoazo) as pigment. ★★★★★
Translucent color
PY3
B

■ Series (price) A to E
Please see product lineup at the end.